

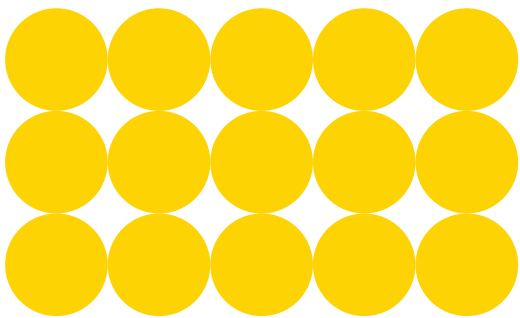
The world's favorite lock



Y Series Escape Hardware



contents



Safety & Security	3
Features and Specifications	4 - 5
Exit Device Accessories	6
Typical Door Installation	7
Technical Drawings	7

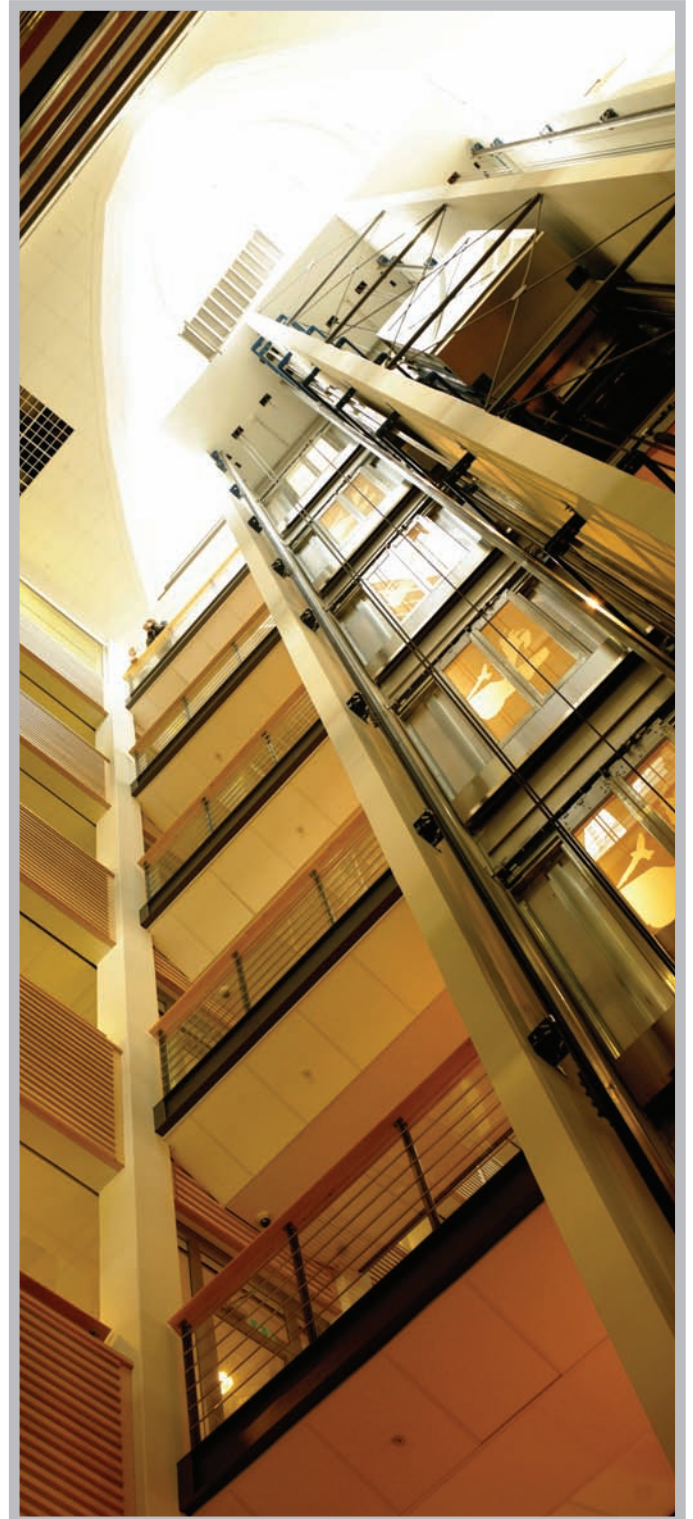
Escape Hardware

Safety & Security

The main purpose of a panic exit device is to give safe and effective escape through a doorway with minimum effort and without prior knowledge of the device. In a panic situation, a group of people will react differently from an individual. When two or more people are running to an escape door, probably in darkness and/or smoke, it is possible that the first one to reach the door will not necessarily operate the panic device, but can push the surface of the door while other people will be trying to operate the panic bar by hand or body pressure.

The Yale Panic Exit Devices will enable a door to be opened at all times by hand or body pressure along the inside face of the panic device and not require the use of a key or any other object.

All Yale Panic Exit Devices are designed for ease of opening by the young, elderly and handicapped and are designed to comply with world class standards for both safety and fire and ensure that they provide a ready means of escape at all times while still maintaining a high level of security.



Escape Hardware

Features and Specifications

Standards

- The Yale Series Panic Exit Devices meet or surpass the following standards.



CE marking according EN1125:1997



These products have been successfully certified on fire door assemblies in accordance with EN1634-1.

Specifications

- Deadlatching on central main latch bolts.
- Safety clutch outside lever trim plate protects the unit from damage that could render the device inoperable.
- Surface mounted for ease of installation.

Product Width

- Standard maximum 838mm to suit 900mm door. 1141mm to suit 1200mm door.

Door Height

- Standard maximum height 2300mm (vertical rod version).
- Installed with centre line of exit device at 1023mm above finished floor level.

Door stile

- Suitable for both 90° and flush head door stiles minimum head clearance requirement of 30mm.

Door Thickness

- Standard 35 to 45mm doors.

Standard Finishes

- | | |
|-----------------|-------------------------|
| • Body | Sliver Powdercoat - SPC |
| • Touchbar | Sliver Powdercoat - SPC |
| • Vertical Rods | Sliver Powdercoat - SPC |

Description

The Yale Panic Exit Devices are available in a range of functions and features. The mechanism for the panic exit device has been designed to ensure easy installation, clean styling and ease of operation. This product offering is suitable for single or double doors.

Applications

It is important that the width of the passage of the door is not unduly reduced by the projection of the operating bar. This is why the standards set the projection at 100mm (EN1125:1997). The Yale Panic Exit Devices are suitable for single or double doors, timber, metal, narrow profile and fire doors.

Outside Trims

Key entry with key/lever entry mechanism safety override

Keying

All Yale Series Panic Exit Devices can be used in conjunction with Yale Master Keying Systems, standard Keyed Alike or Keyed to Differ

Specification Service

For all Architectural hardware specification assistance refer to your local ASSA ABLOY Sales Office.

A fully comprehensive, obligation free, Architectural Door Hardware specification can be prepared by Architectural Hardware Consultants.

Cleaning

Care should be taken during construction/refurbishment to ensure that paint, thinners, mortar or cement splashes are carefully removed from locks, furniture and hardware. Removal of these splashes with strong cleaning agents or scourers should be avoided.

Dirt and grime should be regularly removed with a soft and clean cloth. Do not use solvent based or abrasive cleaning agents. During cleaning, care should be taken to prevent cleaning solution from entering the cylinder keyway. Surfaces should be dried and possibly lubricated.

Rim Latch and Vertical Rod Type Panic Exit Device

Features and Specifications

Vertical Rod Device

- Suitable for single and double doors up to 1200mm wide and 2300mm in height.
- Slim, neat design, surface mounted, automatic top and bottom latches maintaining the bolt is withdrawn when the door is open, pick resist, bottom latch.

CE Certified

- The Yale Rim Latch Type and Vertical Rod Panic Exit Devices are CE certified to BS EN 1125

Rim Device

- Designed to provide a ready means of escape at all times by the single action of pushing on a horizontal bar fitted across the full width of a door.
- Suitable for single and double door applications up to 1200 mm width doors.
- Slim, neat design, surface mounted.
- External Cylinder and Lever option available.

* Pack includes standard and flush head top strike. External Cylinder and Lever option available.

Fire Rating

- The Yale Rim Latch Type and Vertical Rod Panic Exit Devices have been successfully tested on fire door assemblies in accordance with EN1634-1

Rim Latch Exit Device

YPE-RM-010



Vertical Rod Panic Exit Device

YPE-VM-010



Door Suitability

- The Yale Rim Latch Type and Vertical Rod Panic Exit
- Devices are suitable for timber, metal and aluminium doors with mid rail.

Handing

- All functions are reversible and non-handed

Materials

- The body is manufactured of steel.
- Internal mechanisms made of steel. Main and Secondary cover made of decorated Zamak.
- Horizontal bar made of decorated steel.
- Lever plate operating mechanism is made from electro plated steel pressings with high density zinc alloy cover.

Latchbolt

- Made of double Nickel plated steel.

Auxiliary Latch

- Made of double Nickel plated steel.

Finish

Silver Powdercoat - SPC

How to order

Ordering No.	Product Description	Finish
YPE-RM-010	Rim Latch Exit Device	Silver Powdercoat - SPC
YPE-VM-010	Vertical Rod Panic Exit Device	Silver Powdercoat - SPC

Escape Hardware

Exit Device Accessories

Outside Access Device



The Yale outside Access Device (Lever and Cylinder) is able to be used on both the Yale Rim Latch and Vertical Rod Panic Exit Devices.

The Yale Outside Access Device has a built in safety clutch in the outside lever trim plate which protects the unit from damage that could otherwise render the device inoperable.

Model No:
YPEL-010

Product Description:
Panic Exit Device Outside
Access Device (Lever and Cylinder)

Finish:
Silver Powdercoat - SPC

Ordering No. : YPEL-010

*(Cylinder Ordered Separately)

Single Cylinder



Model No:
YCL-45

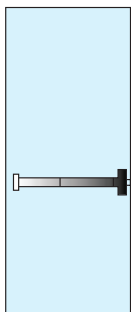
Product Description:
Single Cylinder, Yale key profile,
fixed cam, 45mm length.

Finish:
Satin Chrome - SC

Ordering No. : YCL-45

Typical Door Installations

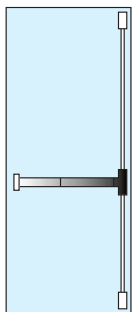
Single Doors



Single Door with Rim Device

Model No:
YPE-RM-010

Product Description:
Yale Rim Latch Type
Panic Exit Device

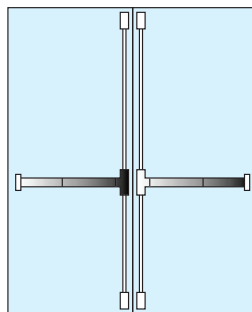


Single Door with Vertical Device

Model No:
YPE-VM-010

Product Description:
Yale Vertical Rod Type
Panic Exit Device

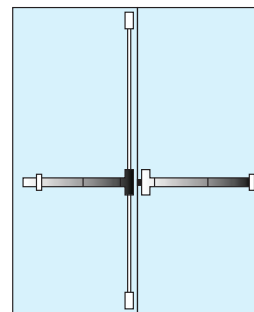
Double Doors



Pair of non-rebated Doors
with 2 Vertical Devices

Model No
YPE-VM-010

Product Description:
Yale Vertical Rod Type
Panic Exit Device
* Two Exit Devices are required



Pair of rebated Doors – 1 Vertical Device,
1 Rim Device and 1 Double Door Strike

Model No:
YPE-VM-010

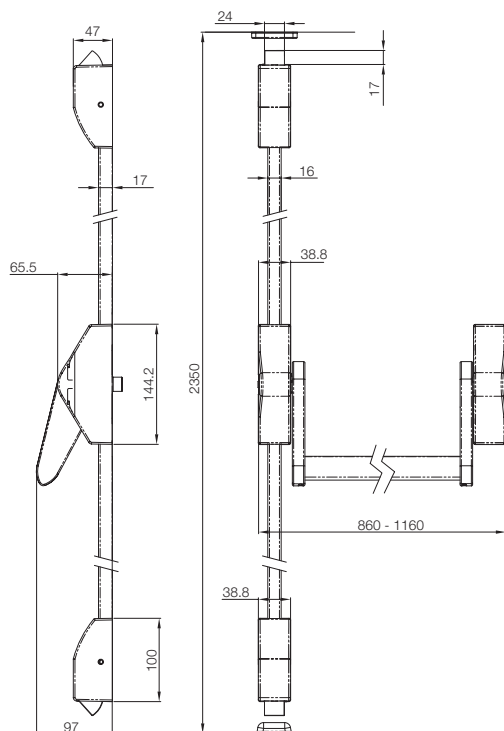
Product Description:
Yale Vertical Rod Type
Panic Exit Device

Model No:
YPE-RM-010

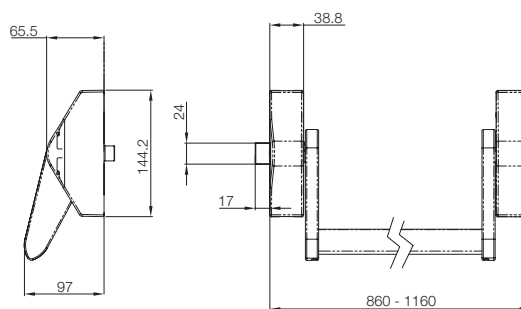
Product Description:
Yale Rim Latch Type
Panic Exit Device

Technical Drawings

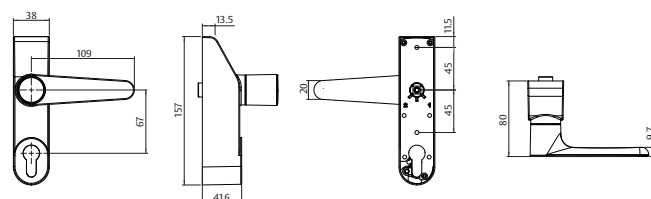
Vertical Rod Device



Rim Device



Outside Access Device



All dimensions are in mm

ASSA ABLOY Asia Sales Office Locations

THE YALE BRAND, with its unparalleled global reach and range of products, reassures more people in more countries than any other consumer locking solution.

www.yalelock.com

THE ASSA ABLOY GROUP, is the world's leading manufacturer and supplier of locking solutions, dedicated to satisfying end-user needs for security, safety and convenience.

ASSA ABLOY Hong Kong Ltd.

33/F., Laws Commercial Plaza,
788 Cheung Sha Wan Road,
Kowloon, Hong Kong
Tel : +852 2260 0888
Fax : +852 2686 8682
E-mail : sales@assaabloy.com.hk

ASSA ABLOY Hong Kong Ltd., Philippines Branch

Unit 1505, 15/F World Trade Exchange Building,
215 Juan Luna Street, Binondo, Manila, Philippines
Tel : +63 2 244 2890
Fax : +63 2 244 2889
E-mail : sales@assaabloy.com.hk

ASSA ABLOY Hong Kong Ltd., Taiwan Branch

3F-2, No. 201, Ho Ping East Road,
Section 2, Taipei, Taiwan
Tel : +886 2 2709 0686
Fax : +886 2 2754 1617
E-mail : sales@assaabloy.com.hk

ASSA ABLOY Singapore Pte. Ltd.

140 Paya Lebar Road,
Unit 07-11 A-Z Building,
Singapore 409015
Tel : +65 6880 0000
Fax : +65 6880 0500
E-mail : sales@assaabloy.com.sg

ASSA ABLOY Malaysia Sdn Bhd

No. 14, 14A & 14B, Jalan Wan Kadir 1,
Taman Tun Dr. Ismail,
60000 Kuala Lumpur, Malaysia
Tel : +60 3 7725 3888
Fax : +60 3 7725 8333
E-mail : info@assaabloy.com.my

ASSA ABLOY Thailand Limited

1919 Preecha Group Building, 5th Floor,
Pattanakarn Road, Suanluang,
Bangkok 10250, Thailand
Tel : +66 2 722 7371
Fax : +66 2 722 7375
E-mail : sales@assaabloy.co.th

ASSA ABLOY India Private Limited

B 206, 2nd Floor, Universal Business Park,
Off Saki Vihar Road, Kamani Oil Mills Lane,
Andheri (East), Mumbai – 400 072, India
Tel : +91 22 4005 1380
Fax : +91 22 4005 1383
E-mail : info@assaabloy.co.in

ASSA ABLOY China, Beijing Branch

11/F., Tower D, Global Trade Center,
36 North Third Ring Road East,
Dongcheng District, 100013, Beijing,
People's Republic of China
Tel : +86 10 5913 7137
Fax : +86 10 5913 7137
E-mail : info@yaleasia.com

ASSA ABLOY China, Shanghai Branch

6/F., Suite South, Shanghai Merchant Plaza,
333 Cheng Du North Road, JingAn District,
Shanghai 200041, People's Republic of China
Tel : +86 21 5298 1136
Fax : +86 21 5298 0416
E-mail : info@yaleasia.com

ASSA ABLOY China, Southern China Branch

Rm.626, Block East,
Innovation & Technology Plaza Phasa 2,
Tian An Cyber Park, Shenzhen 518040
People's Republic of China
Tel : +86 755 8835 2652
Fax : +86 755 8359 8261
E-mail : info@yaleasia.com

ASSA ABLOY Korea

4/F., iRevo Bldg, 459-7, Gasan-dong, Geumcheon-
gu, Seoul, 153-803, Korea
Tel : +82 2 6710 0600
Fax : +82 2 6710 0670
E-mail : sales@assaabloykorea.com

ASSA ABLOY Japan

Office 315, AIOS Gotanda Bldg
1-10-7 Higashi-gotanda Shinagawa-ku,
141-0022, Tokyo, Japan
Tel : +81 3 6424 5499
E-mail : info.japan@assaabloy.com

The world's favorite lock



Legal Disclaimer

Whilst every effort has been made to ensure that the information contained in this brochure is accurate at the time of publication, ASSA ABLOY recommends that you consult ASSA ABLOY or its agents prior to placing an order to ascertain current information on specific products, as ASSA ABLOY reserves the right to make changes without notice. ASSA ABLOY will not be liable for any injury, loss or damage whatsoever, arising from any errors or omissions in the information contained in the brochure or arising from the use or application of the information contained herein. This brochure does not constitute an offer for the sale of any particular product.

YLC-EH-2010-V1