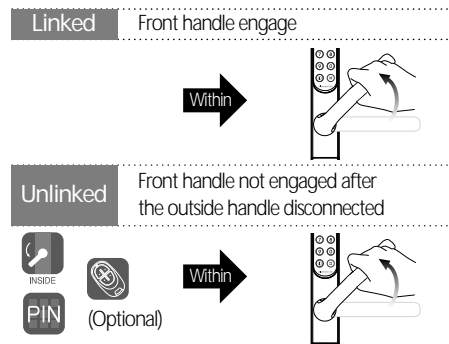


3 Securely Locking Your Door

- **Inside :** Press push button & lift the handle.
This can be done anytime and will always fully secure your door.
- **Outside :** Close the door and lift up the handle within the set connection time
Once the lever disengages you must enter your PIN or press remote and lift up the lever within the connection time to securely lock your door.



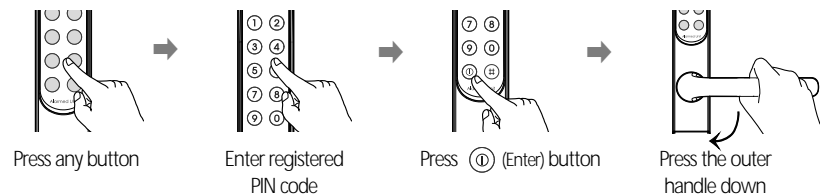
⚠ If the time expires you need to re-engage the handle to securely lock your door. You can re-engage by pressing the remote, pressing the inner lever down or entering your pin.

- ※ **Exception :** In the Passage mode, the handle is operable all the time.
- ※ The automatic disconnection time can be varied by user setting. Refer to section "settings".

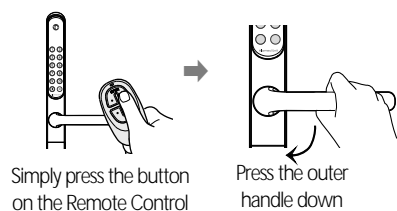
⚠ **IMPORTANT** Your door is only securely locked from the inside when the inside lever is lifted up & the voice instruction "lock closed, securely locked" is heard & red LED shows.

4 Opening Your Door

• PIN Code



• Remote Control (Optional)

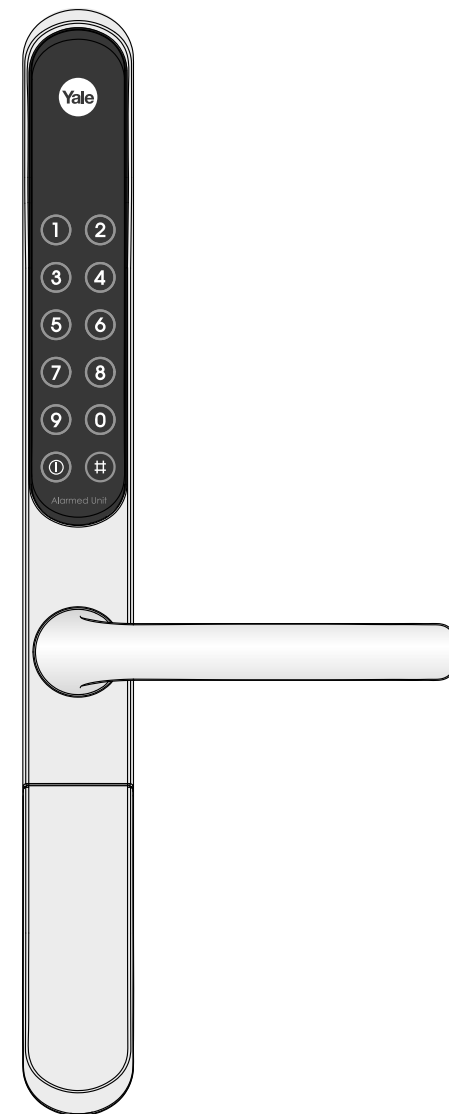


ASSA ABLOY

ISL-1251-00 Rev.2



Installation Guide



DO NOT FIT KEY FREE UNTIL DOOR INSTALLTION IS COMPLETE.
BEFORE FITTING KEY FREE, READ THROUGH & FOLLOW ALL
THE SIMPLE INSTRUCTIONS in STEPS 1 - 4.

The functions and design of this product can be changed
without prior notice for performance and quality improvements.

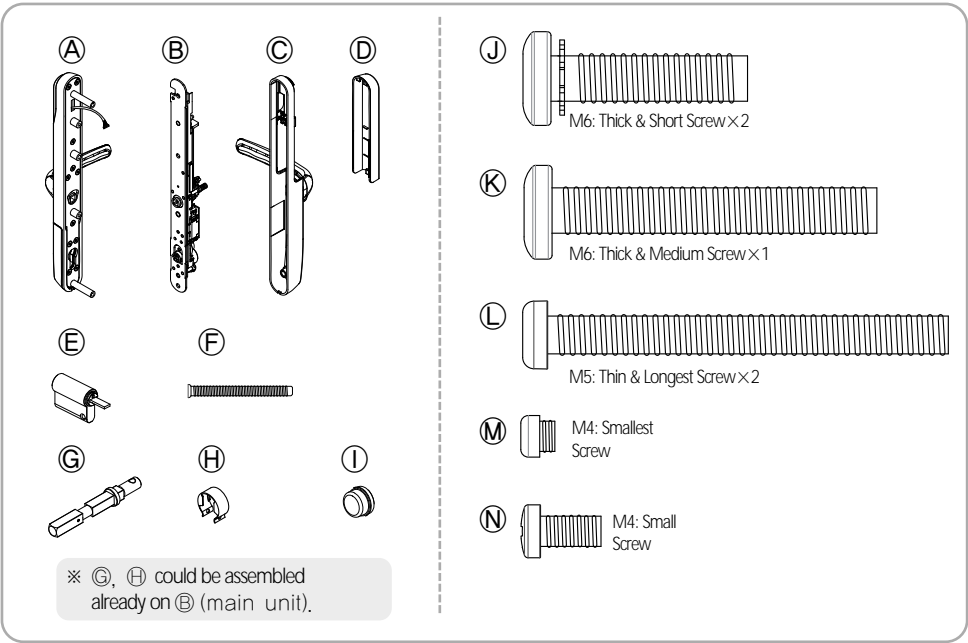
Contents

Installation Guide	Contents Include	1
	Fixing Cylinder	2
	Fitting The Spindle	
	Fitting The Handling Screw	
	Installation	3
	Check Points after Installation	5

Quick Guide	Registering Your PIN Code	6
	Registering Your Remote Controls (Optional)	
	Securely Locking your door	7
	Opening Your Door	

1 Contents Include

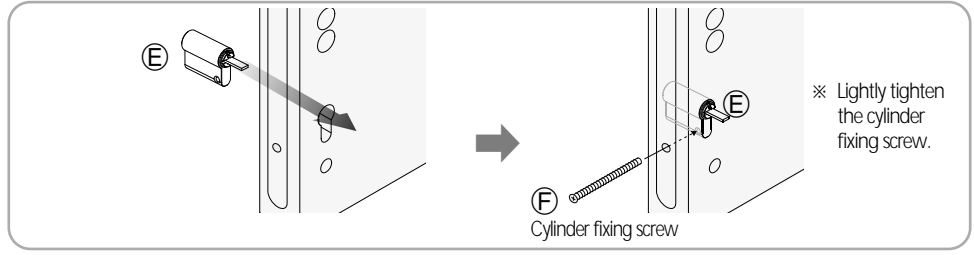
※ Fit Key Free using hand Phillips screw driver to avoid cross threading fixing screws. If using a cordless, please ensure it is set to low speed & torque.



Yale® Keyfree

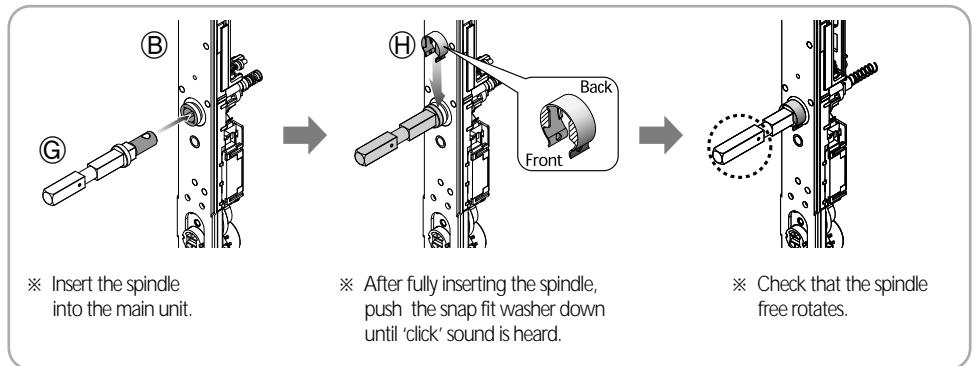
Installation Guide

2 Fixing Cylinder



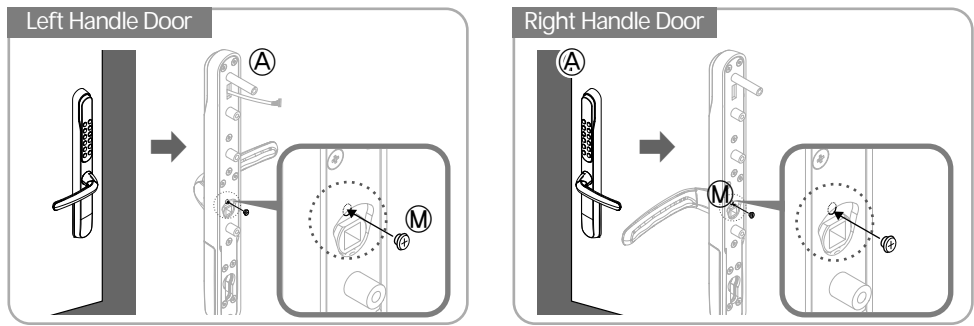
3 Fitting the Spindle

※ In case that the main unit includes the spindle already, please skip step ③.



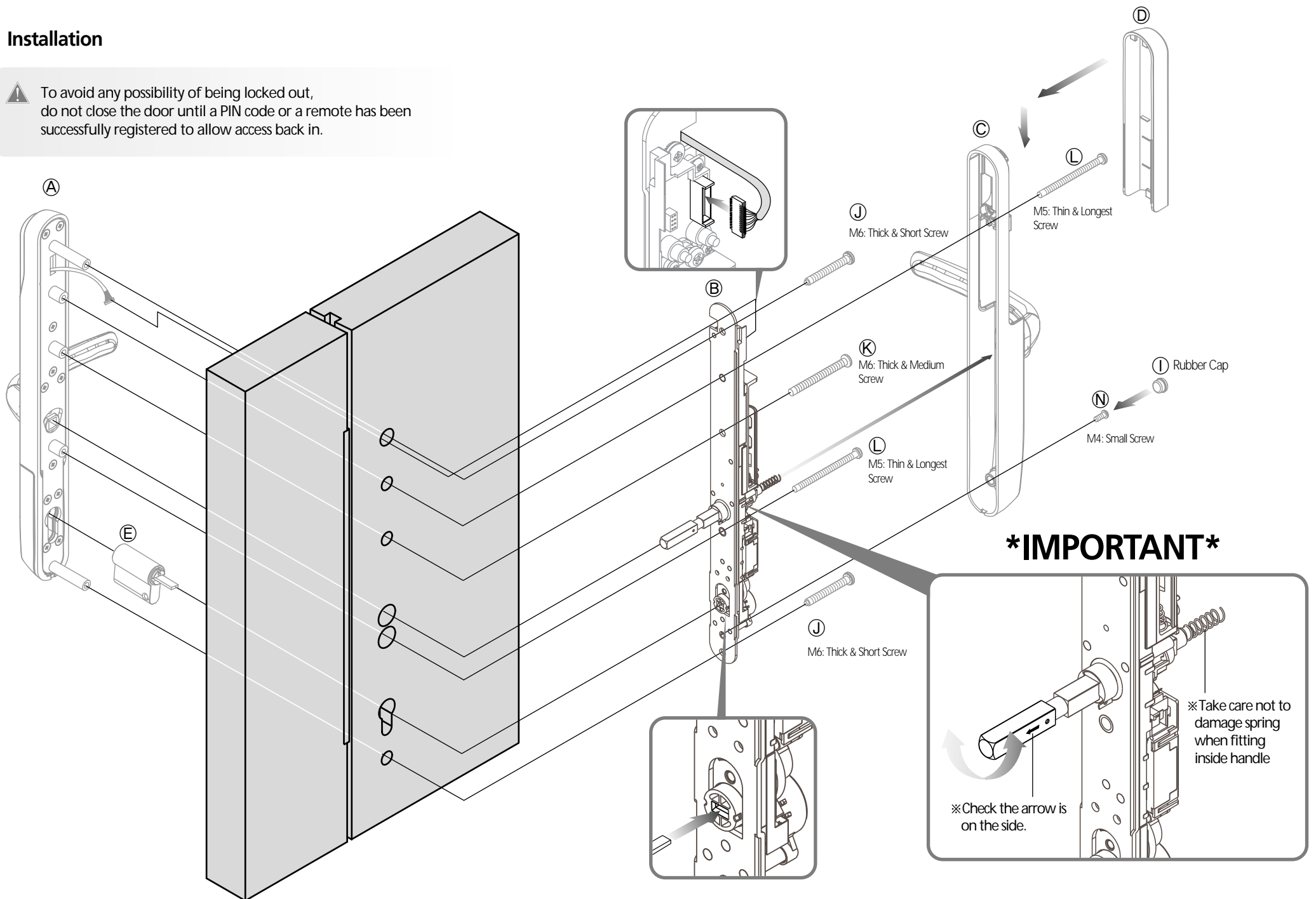
4 Fitting the Handling Screw

※ Before fitting Key Free, the handling screw must be fitted. Failure to do so will allow the outside lever to rotate. Only use the handling screw provided which is attached to the underside of the outside lever in a bag with a yellow warning label.




5 Installation

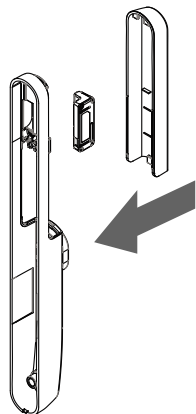
! To avoid any possibility of being locked out, do not close the door until a PIN code or a remote has been successfully registered to allow access back in.



6 Check Points after Installation

- ① Insert Batteries
- ② Insert Remote Control(Optional) module

 Take care inserting the Remote Control(Optional) module.
The pins can easily bend and may not be replaced under warranty



③ Inside Lever Voice Handing

When an inside lever is fitted to LH side of door, voice handing will be correct.
No further action required.

When an inside lever is fitted to RH side of door the voice instruction will be opposite.
Eg "lock closed securely locked" when opening the door.

Follow the simple procedure below to set the correct voice handing.



④ Check The Mechanical Back Up Key Works Properly

- Turn key to 90 degree.
- Press outside lever down & open door.
- Remove key

⑤ Check the free movement of both inside & outside levers

- Check the operation of the inside handle child safety / security button handle.
- The inside lever must not move unless the button is depressed.
- When the inside lever returns to horizontal, the button must re-engage to prevent use.

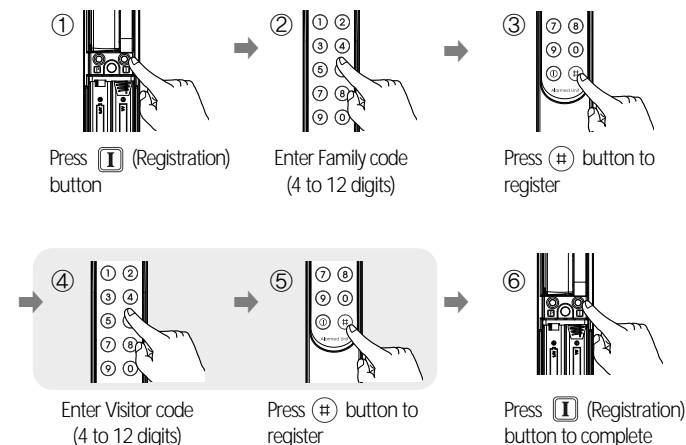
※ If the button does not re-engage, please slightly lift up the inside lever to re-engage.

Quick Guide

1 Registering Your PIN Code

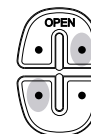
Family code is the code that you and your family remembers as your PIN.

The visitor code can be given to guests or work people. Once guests or work people have left you can change the visitor code without you or your family learning a new one.



※ If you want to use just one PIN Code for family, then skip the ④-⑤th steps and press Registration button.

2 Registering Your Remote Controls (Optional)



Please press the 2 marked buttons shown at the same time for 3 seconds to register,
The remote LED will show red

