

Treasuring your freedom

Yale Safe User Manual

For Models:

Elite Heavy Duty Safe Series

Please keep manual safe
for future reference.

An ASSA ABLOY Group brand

ASSA ABLOY

Back Cover

Cover

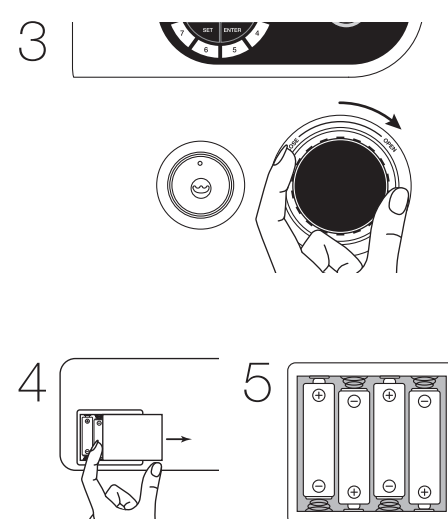
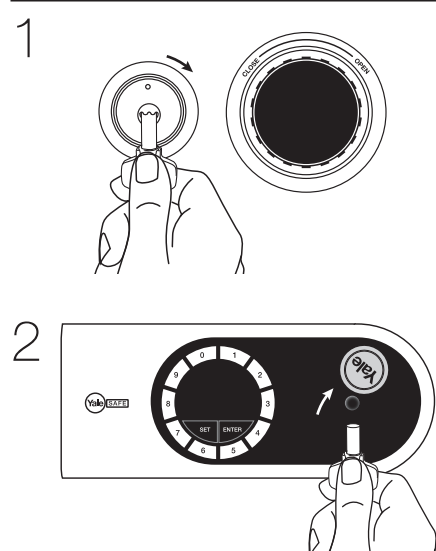
Securing the safe

To reduce the risk of theft it is essential that your safe is securely fixed. Please use the included bolts and secure to a solid concrete wall.

For maximum performance and correct installation a professional locksmith is recommended to install the safe.

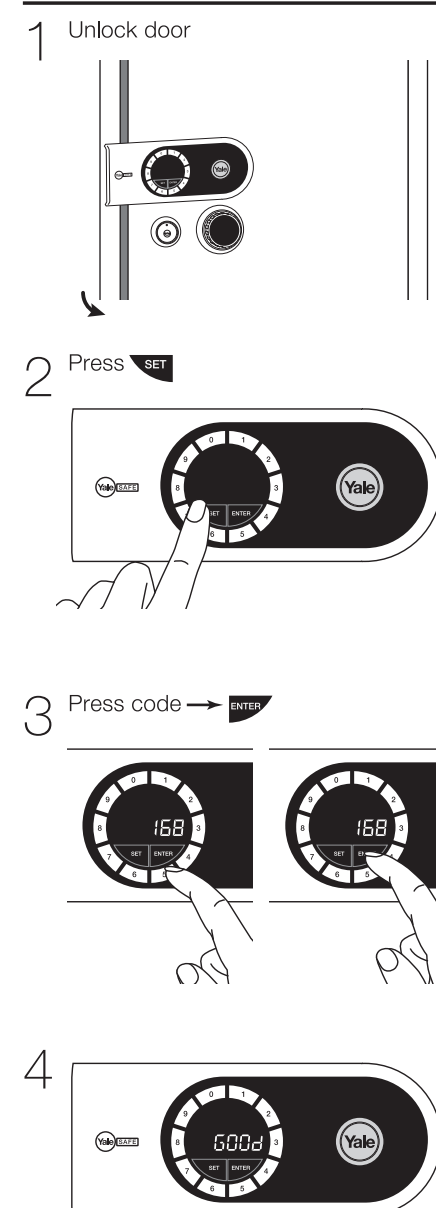
⚠ This product is heavy. Incorrect installation may result in injury.

First time operating a new Safe



- 1 Insert the mechanical key and turn it clockwise.
- 2 Insert the emergency key and turn it clockwise.
- 3 Open the safe door by turning the knob clockwise.
- 4 Remove the battery cover located on the rear of the door.
- 5 Place the batteries according to the illustration at the back of the battery compartment.

Set/re-set your user code



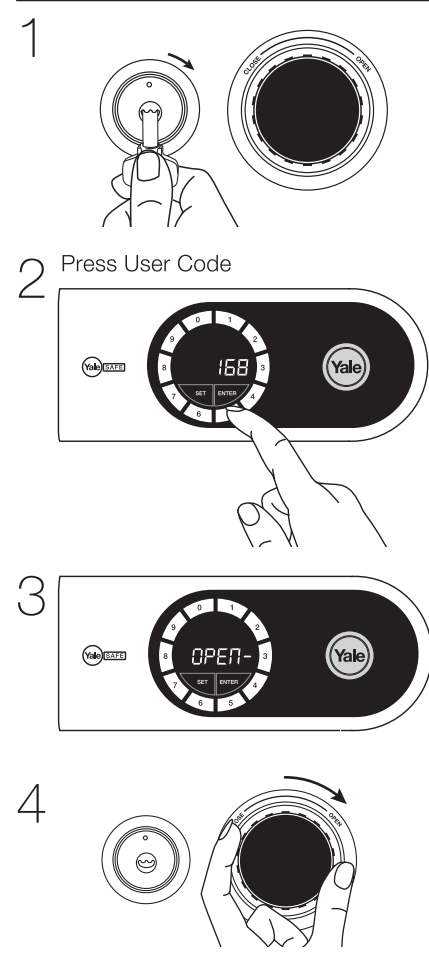
- 1 It is important for user to re-program the User Code and Administration Code for a new Safe unit as soon as it is in place. The User Code may only be programmed when the safe is unlocked. (For re-programming the Administration Code, please follow the instructions in the Administration section in the user manual)
- 2 Press **SET**. Enter the new User Code (3-6 digits). Press **ENTER** to complete the User Code setting.
- 3 The display will show 6000 and new code will be displayed for ~2 seconds.

⚡ The default ex-factory User Code is 168. After the User Code is reprogrammed, Please remember it well and keep it in a secure place. Once it is re-programmed, the default ex-factory User Code CANNOT be used again to unlock the safe

⚡ If you have forgotten your User Code, use the emergency key or Administration Mode to open the Safe. And then re-set your User Code.

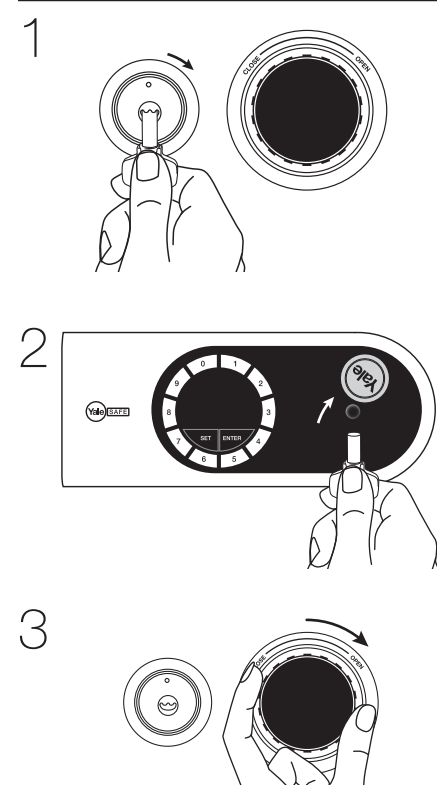
⚡ Please note, your user code does not have to be reprogrammed when you change the batteries.

Opening the Safe by User Code



- 1 Insert the mechanical key and turn it clockwise.
- 2 Enter the user code.
- 3 If the code is correct, the display will show **OPEN-**.
- 4 Open the door by turning the knob clockwise.

Opening the Safe by Emergency Key

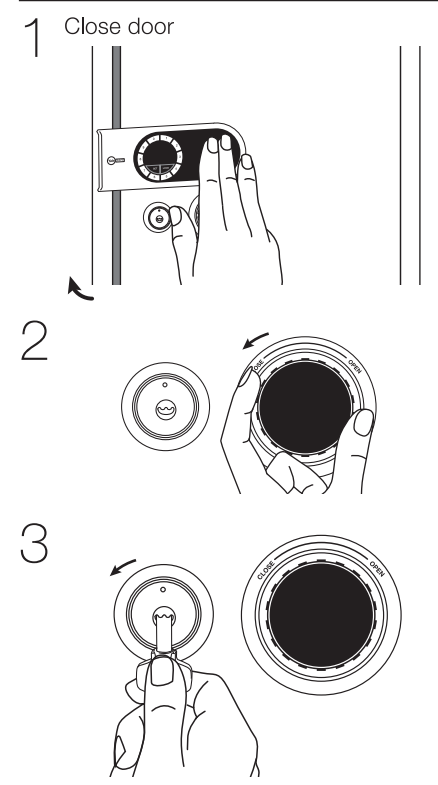


- 1 Insert the mechanical key and turn it clockwise.
- 2 Insert the emergency key and turn it clockwise.
- 3 Open the Safe by turning the knob clockwise.

Please note, if an incorrect user code is entered, the display will show "Error" and the door will not open. If the wrong user code is entered 3 consecutive times an alarm will sound for approximately 1 minute. The safe will be locked down for approximately 3 minutes. During this time, the safe cannot be unlocked by electronic user code.

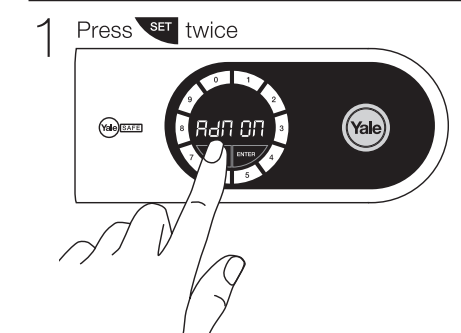
P3

Closing the safe



- 1 Close the Safe door.
- 2 Turn the knob anti-clockwise.
- 3 Turn the mechanical key anti-clockwise to lock the Safe.
- 4 If the emergency key was used to unlock the safe, turn also the emergency key anti-clockwise to lock the Safe.

Administration mode



- 1 Press **SET** twice to activate the Administration entry mode.
- 2 Press the Administration pass code and then press **ENTER** button to enter.
- 3 If the Administration pass code is entered correctly, it will display **CC--**.
- 4 User can then make different settings under the Administration Mode.
- 5 To exit the Administration Mode, either press **SET** or it will exit automatically after idle for approximately 20 seconds.

The default ex-factory Administration Code is 000000. After the Administration Code is reprogrammed, Please remember it well and keep it in a secure place. Once it is re-programmed, the default ex-factory Administration Code CANNOT be used again to unlock the safe.

P4

Unlock the safe in Administration mode

- 1 Insert the mechanical key and turn it clockwise.
- 2 Under the Administration Mode, enter **00** and then press **ENTER**.
- 3 The display will show **OPEN-**. Turn the knob clockwise to open the Safe.

Reset the Administration Code

- 1 Under the Administration Mode, enter **01** and then press **ENTER**.
- 2 The display will show **REC REC**.
- 3 Enter the new Administration Code and then press **ENTER**.
- 4 The display will show **REPEAT**.
- 5 Enter the new Administration Code again for confirmation and then press **ENTER**.
- 6 If the new Administration Code is successfully registered the display will show **GOOD**. Otherwise it will show **Error** and no new Administration Code would be set.

Turning sound on/off

- 1 Under the Administration Mode, enter **02** and then press **ENTER** to toggle between sound on/off. Default setting is on.

- If display **SOUND OFF**, the audio feedback when operating the safe is turned off.
- If display **SOUND ON**, the audio feedback when operating the safe is turned on.

The sound on/off option does not affect the alarm sounding of 3 consecutive wrong entries.

Show/hide digits while entering code

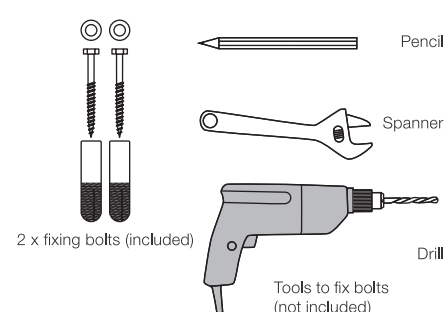
- 1 Under the Administration Mode, enter **03** and then press **ENTER** to toggle between display on/off. Default setting is on.

- If display **DIS OFF**, it shows "-" only when a code is entered and the code will not be displayed after locking.
- If display **DIS ON**, the code will be shown during it is entered and the code will be displayed after locking.

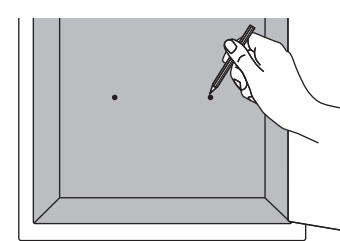
P5

Battery replacement warning

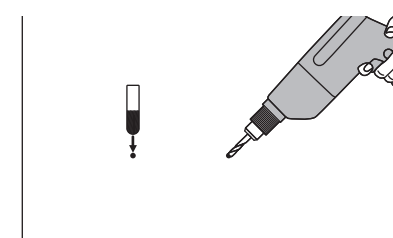
When the battery is about to run out, the display will flash **LOW BATT** during operation. User should replace with new batteries as soon as possible.



- 1 Mark the position of the safe through fixing holes.



- 2 Remove the safe and drill the holes as marked. If needed, drop the plugs in the drilled holes.

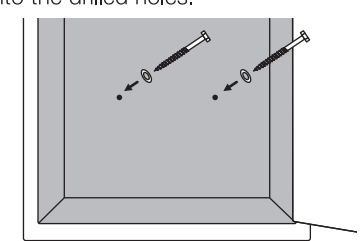


Installing the safe

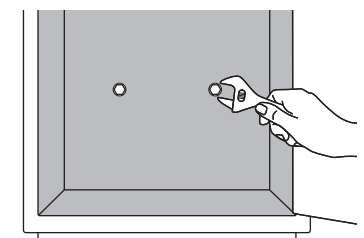
To reduce the risk of theft it is essential that your safe is securely fixed. Please use the provided bolts to fix the safe horizontally and secure to a solid concrete wall.

There are pre-drilled fixing holes on the back. The holes are covered by the inner lining. Please use a sharp tool to penetrate the hole from the back first to locate the hole positions.

- 3 Reposition the safe over the holes. Drop the screws and washers through the safe into the drilled holes.



- 4 Tighten the fixing bolts firmly and ensure there is no movement of the safe.



P6