

FITTING INSTRUCTIONS V-WS1-GL

● Fitting instructions

Prior to fitting familiarise yourself with its simple action. Caution: Before drilling or fitting screws check position of the glass and seals.

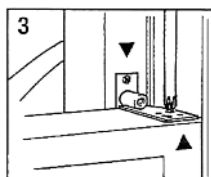
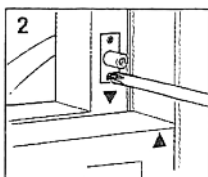
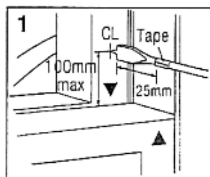
Close window, measure width of outer frame and mark vertical centre line. Intersect with a horizontal line a maximum of 100mm (4") dia. Hole, 25mm (1") deep. Hole depth can be marked on drill bit with tape.

Insert window stop and ensuring it is vertical to the frame mark around its edge. Remove and chisel out so face plate lies flush. Mark and prepare top and bottom fixing holes and secure with screws. **Do not overtighten.**

Place the window stop plate on top of the central horizontal frame and open the window to position plate directly beneath the stop. Mark and prepare fixing holes (plate can be recessed if required) and secure with screws. **Do not overtighten.**

N.B Equivalent imperial sizes are approximate.

Do not use abrasive cleaners, solvents or polish. Only use moist soft cloth.



The world's favourite lock

www.yale.co.uk E-mail: locksinfo@yale.co.uk



2 Year Guarantee Statement

This product is guaranteed for consumers against faulty workmanship, materials and function for a period of 2 years from the date of purchase providing the full installation and maintenance instructions are followed. Please keep your proof of purchase safe, this must be submitted when making a claim under this guarantee.

Please note that it is a condition of this guarantee that your Yale product:

- Has been correctly installed and maintained in accordance with the Yale installation and maintenance instructions provided to you at the time of purchase.
- Has not been modified or damaged in any way.
- Has not been subjected to unauthorized repairs.

Yale are responsible under this guarantee for repairing the product or replacing the product as we deem necessary. If there is fault with the product, please contact Customer Services on 01902 364647, who will give you the name of an expert and confirm what you need to do to make a claim under this guarantee.

Please do not carry out any repairs without our authority or by using an unauthorised expert. Any repairs or other works carried out without our authorization or by using an unauthorized expert will not be covered under this guarantee.

This guarantee is non transferrable and applies to products purchased in the United Kingdom only. This guarantee does not apply to normal wear and tear. This does not affect your statutory rights. A full copy of this guarantee is available upon request by writing to Yale UK, School Street, Willenhall, West Midlands. WV13 3PW or by visiting our website www.yale.co.uk.