



Sliding Window Lock

- Prevents intruder from opening window by releasing catch
- locks inner and outer sliding frame



USE ON
TIMBER
WINDOWS

WHITE
FINISH

SUITABLE REPLACEMENT FOR CHUBB V-8K108-WE

FOR MORE INFORMATION SEE BACK OF PACK



● Features

- Suitable for sliding wooden windows

● Tools required

- Bradawl
- Pozidrive screwdriver
- Pencil

● Fitting instructions

Prior to fitting familiarise yourself with its simple action.

Caution: Before fitting screws check position of glass and seals.

A. The position of locking block and lock housing in relation to the frame edges must be followed when fitting.

1. Close the window and position the locking block on top of the outer central horizontal frame. Mark and prepare fixing holes and secure with screws.

Do not overtighten.

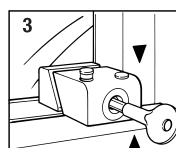
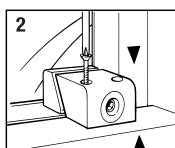
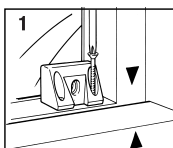
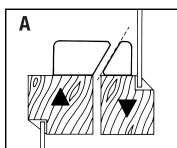
2. Position lock housing on the inner central horizontal frame directly opposite the locking block. Mark and prepare fixing holes and secure with screws.

Do not overtighten

3. Insert key into lock housing then push and turn until locking bolt engages in the locking block, turn key to clench frames together to check operation. Insert plastic caps to conceal screwheads.

Do not excessively overtighten when locking

Do not use abrasive cleaners, solvents or polish. Only use moist soft cloth.



The world's favourite lock

www.yale.co.uk E-mail: locksinfo@yale.co.uk

V-8K108-WE



ISSUE 1