



## Window Locks

- Secures window to fixed frame
- Key operation engages locking



USE ON  
TIMBER  
WINDOWS

WHITE  
FINISH

**SUITABLE REPLACEMENT FOR CHUBB V-8K109**

**FOR MORE INFORMATION SEE BACK OF PACK**



## ● Features

- Suitable for outward opening hinged wooden windows

## ● Tools required

- Bradawl
- Pozidrive screwdriver
- Pencil

## ● Fitting instructions

Prior to fitting, familiarise yourself with its simple action. If fitting onto a hardwood window, it may be necessary to drill pilot holes for fixing screws.

**Caution: Before drilling or fitting screws, check position of glass and seals.**

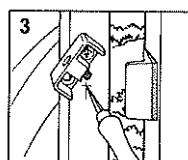
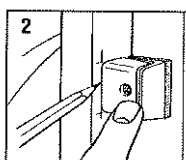
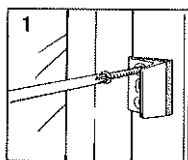
1. Close window, position locking plate on the fixed frame allowing for any gap between the window and the frame. Locking plate must be square to the opening window. If necessary use wedge supplied (in exceptional circumstances wood may also have to be removed). Mark, prepare and loosely fit top fixing screw. Mark bottom fixing hole, swing locking plate aside then prepare hole and fix screw. Secure top and bottom fixing screws. (Fig 1) **Do not overtighten**

2. Place lock body centrally behind plate with outer edges flush. Mark position with pencil then remove the lock body. (Fig 2)

3. Open window, re-position lock then mark, prepare and fix top and bottom fixing screws as before. (Fig 3) **Do not overtighten**. Check operation.

**Do not excessively overtighten when locking.**

Do not use abrasive cleaners, solvents or polish. Only use moist soft cloth.



**Yale**

**The world's favourite lock**

[www.yale.co.uk](http://www.yale.co.uk) E-mail: [locksinfo@yale.co.uk](mailto:locksinfo@yale.co.uk)