



Door Chain & Bolt Fitting Instructions

Tools required



Drill

Required
Drill Bits:
Ø3mm

Bradawl

Crosshead
Screwdriver

Pencil

If fixing screws into hardwood frames, use a suitable drill to make a pilot hole

Before commencing please read thoroughly and familiarise yourself with these instructions and use of product. Illustrations show internal views based on a door hung right, opening inwards when viewed from inside. Caution: Before drilling or fitting screws check position of any glass in door or frame.

The WS16 Door Chain and Bolt' is suitable for inward opening doors, hinged on the right or left when viewed from inside. Your door chain is supplied suitable for doors hinged on right. If your door is hinged left it can easily be converted to suit.

1a Converting to Door Hinged Left

Gently prise the rear cover plate from bolt housing to expose bolt.

1b Remove bolt

2a Rotate bolt through 180 degrees and replace. Spring can be held back for easier fitting, then replace rear cover plate.

2b Position the bolt housing on the face of the door level with the opening edge.

NB The 2 fixing holes nearest the door edge are angled slightly towards the hinged side of the door to give extra security against forced attack.

Mark the top fixing hole furthest from the door edge. Remove bolt housing and drill a 3mm (1/8") pilot hole to a suitable depth and loosely fix with a crew. Repeat operation for each screw, after swinging aside bolt housing to prevent damage. Secure all screws. DO NOT OVERTIGHTEN.

3a Insert chain end into bolt housing and turn 270 degrees anti-clockwise to throw bolt. On doors hinged left turn in clockwise direction.

3b Flush Doors and Frames

Position staple on fixed frame level with frame edge with the bolt located centrally in the slot in staple. NB: The 2 staple fixing holes nearest the door opening are angled away from the door. Mark and prepare top and bottom fixing screw holes nearest door edge.

Mark and prepare 3rd fixing screw hole, if site conditions allow, however if this is not possible insert plastic cap into countersunk screw hole. Fix screws. DO NOT OVERTIGHTEN. Test operation.

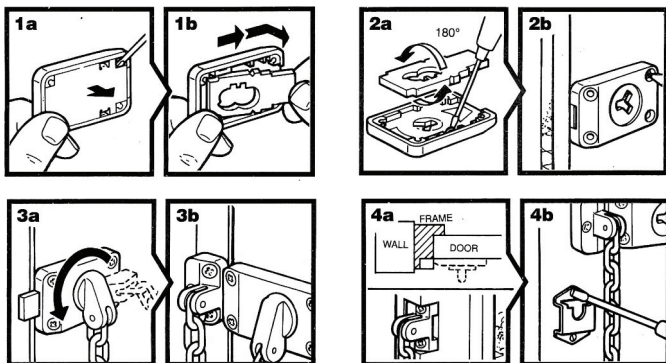
4a Non-Flush Doors and Frames

If the frame and door face are not flush, the frame will have to be recessed to ensure the staple is seated exactly opposite the bolt housing. When staple is seated, correctly proceed as fig 3b.

4b Locate the chain parking bracket below and to the side of staple ensuring the chain end can be "parked" easily and the chain does not obstruct the door opening. Mark and prepare top hole and fix with small screw. Mark bottom hole, swing bracket aside, prepare hole and fix bracket. Secure both screws. DO NOT OVERTIGHTEN.

Operating Instructions: Door Hinged Right

Chain is placed "on guard" by inserting the chain end into the housing and turning at 90 degrees clockwise. Bolt is thrown by inserting chain end into the housing and turning 270 degrees anti-clockwise. From the "on guard" position bolt is thrown by turning chain end 360 degrees anti-clockwise. Doors hinged left are a reverse of the above instructions. To allow unrestricted opening of door remove chain end from housing and place into parking bracket. DO NOT USE ABRASIVE CLEANERS, SOLVENTS OR POLISH. ONLY USE A SOFT MOIST CLOTH.



Please note: This product may differ slightly from the illustrations



The world's favourite lock since 1843

School Street, Willenhall, West Midlands WV13 3PW

www.yale.co.uk Tel: +44 (0) 1902 364647 E-mail: info@yale.co.uk

Issue No: 01-2012

An ASSA ABLOY Group brand

ASSA ABLOY



2 Year Guarantee Statement

This product is guaranteed for consumers against faulty workmanship, materials and function for a period of 2 years from the date of purchase providing the full installation and maintenance instructions are followed. Please keep your proof of purchase safe, this must be submitted when making a claim under this guarantee.

Please note that it is a condition of this guarantee that your Yale product:

- Has been correctly installed and maintained in accordance with the Yale installation and maintenance instructions provided to you at the time of purchase.
- Has not been modified or damaged in any way.
- Has not been subjected to unauthorized repairs.

Yale are responsible under this guarantee for repairing the product or replacing the product as we deem necessary. If there is fault with the product, please contact Customer Services on 01902 364647, who will give you the name of an expert and confirm what you need to do to make a claim under this guarantee.

Please do not carry out any repairs without our authority or by using an unauthorised expert. Any repairs or other works carried out without our authorization or by using an unauthorized expert will not be covered under this guarantee.

This guarantee is non transferrable and applies to products purchased in the United Kingdom only. This guarantee does not apply to normal wear and tear. This does not affect your statutory rights. A full copy of this guarantee is available upon request by writing to Yale UK, School Street, Willenhall, West Midlands. WV13 3PW or by visiting our website www.yale.co.uk.