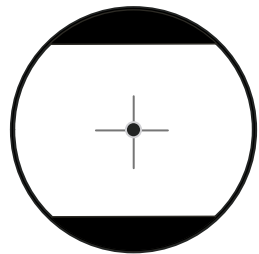




Keyless Digital Lock Installation Guide



12 Contents include

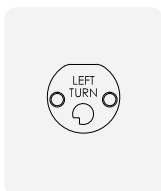
Fit Keyless Digital Lock using a hand crosshead screwdriver to avoid cross threading fixing screws.
If using a cordless, please ensure it is set to a low speed & torque.



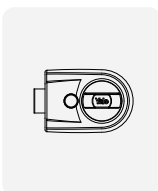
Front body



Battery pack



Handing plate



Y3 chrome
nightlatch
box(Optional)

Screws

- × 3 sizes
(42, 32, 22mm)
A Fixing screw
- × 3 sizes
(42, 32, 22mm)
B Cylinder retaining screws
- × 1
C Battery pack fixing screw
(29mm wood screw)

- Screws
- Batteries
- Self adhesive pad

An ASSA ABLOY Group brand

ASSA ABLOY
ISL-1290-01



PLEASE READ INSTRUCTIONS BEFORE USE.

The functions and design of this product can be changed without prior notice for performance and quality improvement.

Before getting started

Did you purchase the Keyless Digital Lock including a Y3 nightlatch?

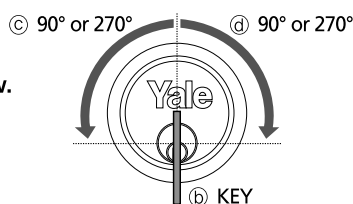
- ☐ YES, I have bought the complete package to install them onto my door.
➔ Please start from installation step **2 ON THE RIGHT PAGE**

- ☐ NO, I am going to keep using the existing nightlatch on my door with the Yale digital product.
➔ There are many types of nightlatches, so please start from installation step **1 BELOW**, and follow the check points for correct installation.

1 Check point!!!

Please use the key of your existing nightlatch and check the below.

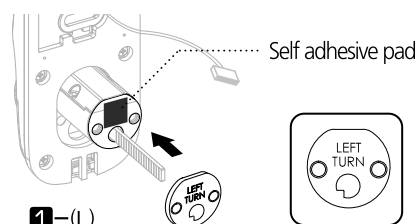
- a Keep your door open.
- b Insert the key in the outside cylinder key hole.
- c Turn the key 90° or 270° counter clockwise (to the left) and check the latch fully retracts.
- d Turn the key 90° or 270° clockwise (to the right) and check the latch fully retracts.



- ☐ Can you open with your key in **both** directions? PLEASE GO TO STEP **2**

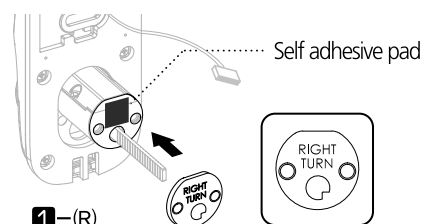
- ☐ Can you open with your key only in the **left** direction? Not in the right direction?
➔ Your nightlatch needs an additional plate.
PLEASE GO TO STEP **1-(L)**

Please attach the additional handing plate tightly onto the cylinder fixing surface.
The plate must be aligned with the shape.
Make sure the '**LEFT TURN**' is shown as the image below if your latch is opened only to the LEFT direction by the key.

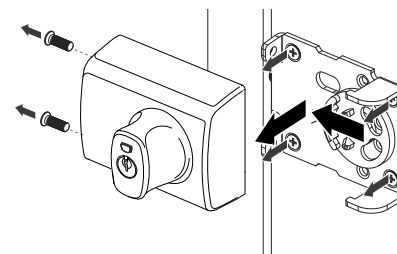


- ☐ Can you open with your key only in the **right** direction? Not in the left direction?
➔ Your nightlatch needs an additional plate.
PLEASE GO TO STEP **1-(R)**

Please attach the additional handing plate tightly onto the cylinder fixing surface.
The plate must be aligned with the shape.
Make sure the '**RIGHT TURN**' is shown as the image below if your latch is opened only to the RIGHT direction by the key.



2 Disassemble lockset

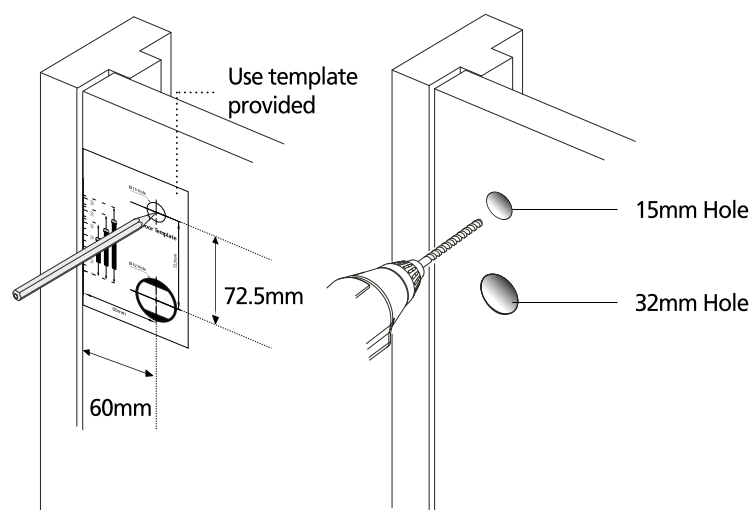


Please disassemble your existing nightlatch case and mounting plate.

Note

The nightlatch & plates shown are generic images. If you are retrofitting Keyless Digital Lock, your product may be different.

3 Door preparation - first fit

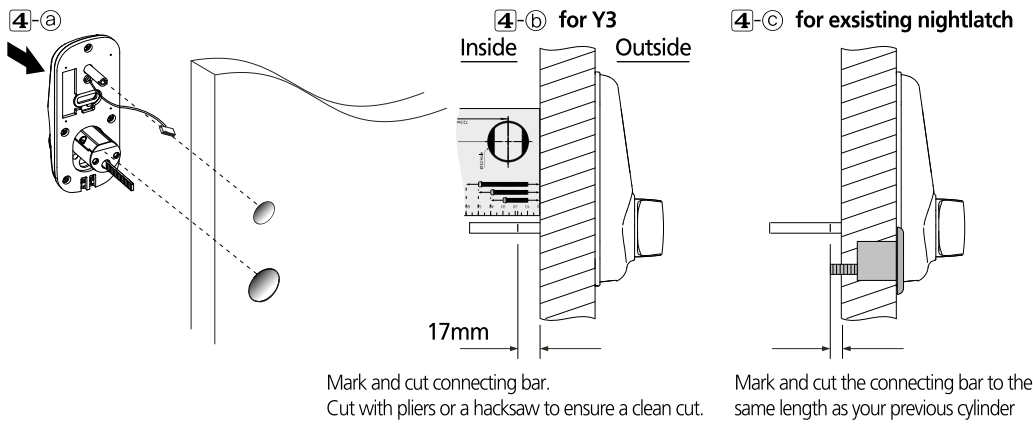


At the height you want your lock, use a pencil to mark a spot exactly 60mm from the edge of the door.
At that spot, drill a 32mm diameter hole through the door.

Note

When replacing an existing nightlatch the 32mm hole should already be prepared. Align the template to this hole and the door edge, and mark the position to drill the 15mm hole. At the spot, drill a 15mm hole through the door.

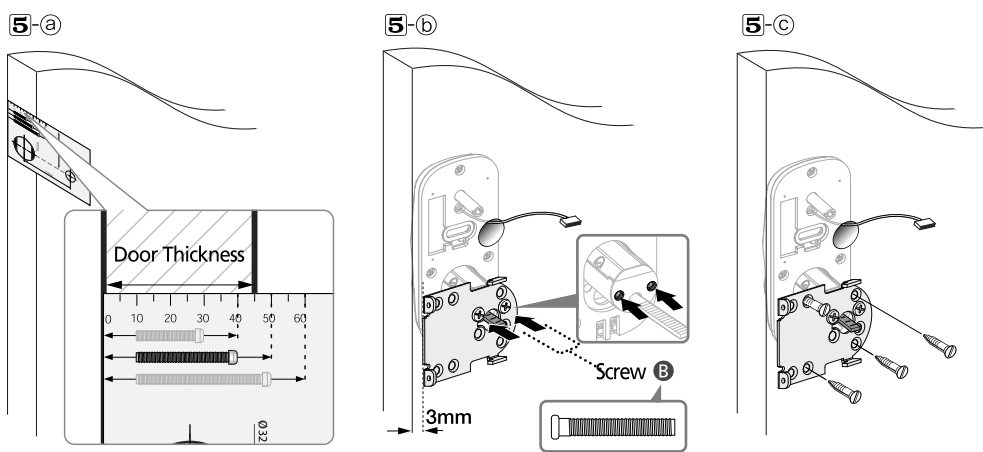
4 Cut connecting bar



Warning : The projection of the connecting bar is important to ensure the lock works correctly.
If you are fitting with Y3 nightlatch, it should not be shorter than 15mm from the mounting plate.
(17mm from the door surface without the mounting plate.)
If you are retrofitting, please make sure you do not cut the tail bar shorter than the existing tail bar on the cylinder.

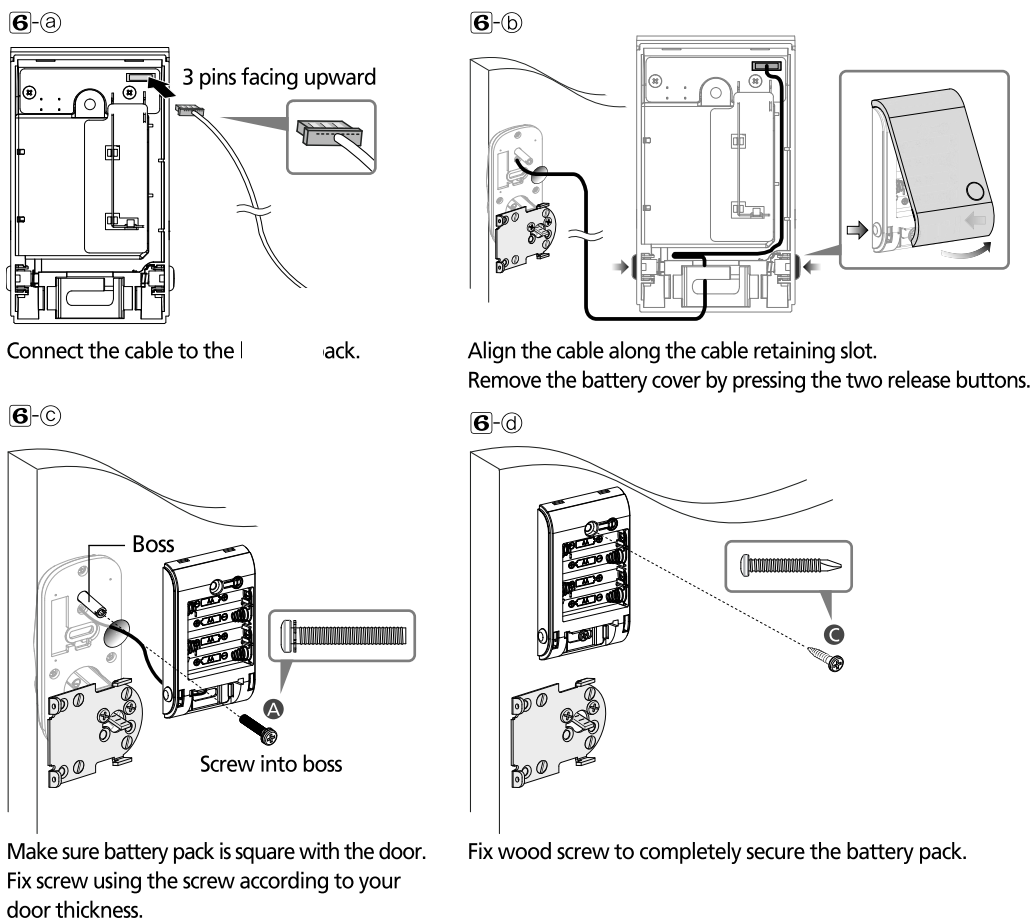
- Place the electronic keypad in the hole on the outside of the door, with the battery cable through the 15mm hole.
- Measure the connecting bar with the provided template, then mark at 17mm from the door surface and cut.
- If you are retrofitting with your existing nightlatch, the connecting bar should be the same length as your previous cylinder connecting bar to work properly.
Place your existing cylinder onto the door side and mark and cut the connecting bar to the same length as the connecting bar on your existing cylinder.

5 Mount external keypad and mounting plate

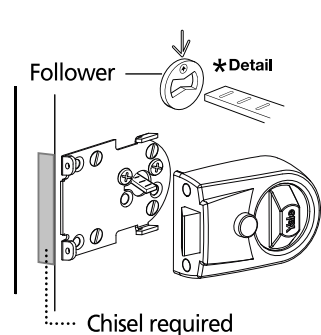


- Use the template provided to choose the correct screw length according to your door thickness.
You should have 3 sets of 2 identical cylinder retaining screws. (Please refer to the screw image ③ on 12.)
Please measure your door thickness with the template provided and choose the right screw sets.
- Take your nightlatch mounting plate and position over the tail bar.
Fix the mounting plate in place through the holes using the 2 screws selected to secure to the external keypad.
- To fix the mounting plate in place, use 30mm screws supplied in the Y3 nightlatch box.

6 Secure battery pack



7 Place lock case and chisel

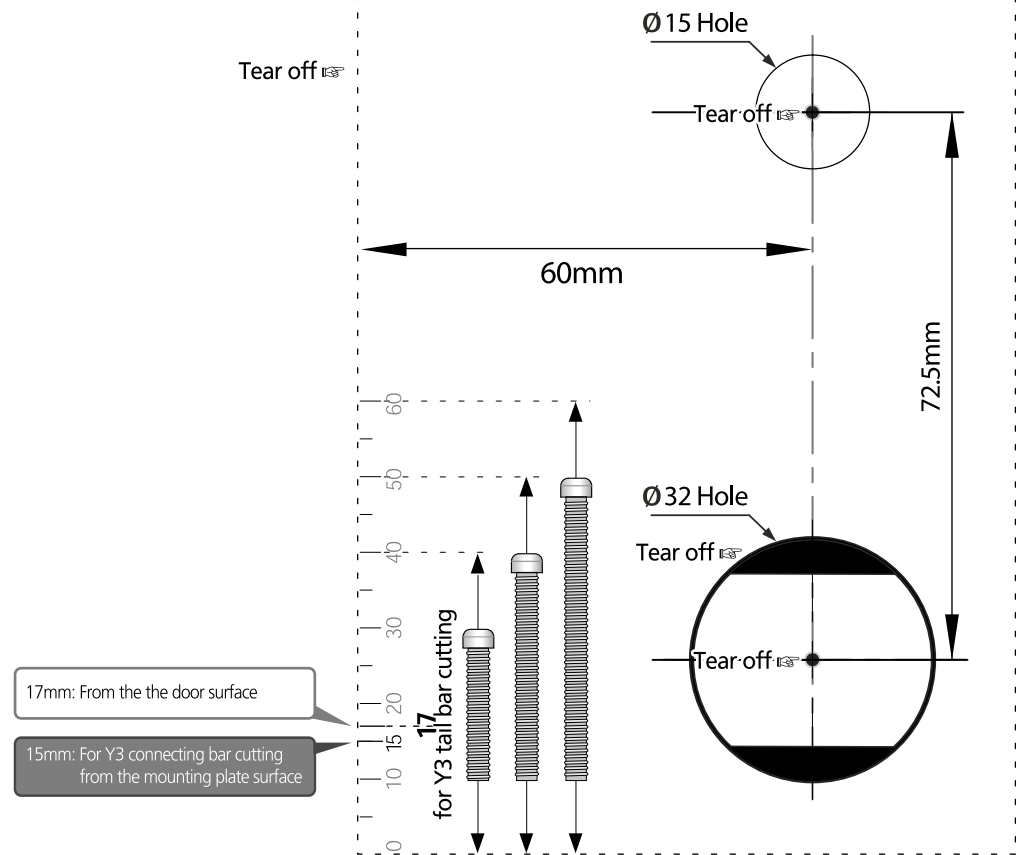


* If you have used a handing plate on STEP 1-(L) or 1-(R), please turn the follower to the end position according to your direction before fixing the lock case.

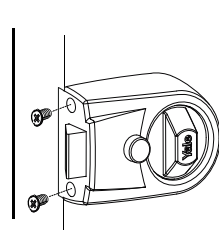
Place the lock case over the mounting plate, making sure that the flat connecting bar is inside the slot in the lock case. Push the lock case down and toward the door. Mark the outline of the lip of the lock body and chisel a recess to hold it securely in place when the lock is fitted.

If the nightlatch is not the same design with your existing nightlatch, some chiselling may be required.

※ Door Template



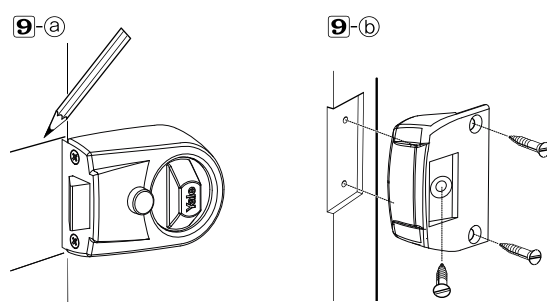
8 Secure lock case



Repeat step 7 to position the lock case flush with the edge of the door.
Secure the lock case to the mounting plate with the two small screws provided.

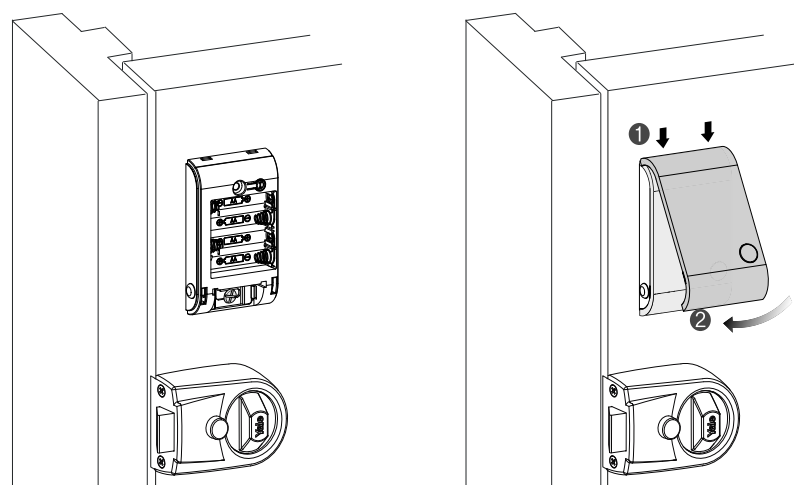
(Tip: With the lock fitted if you experience resistance turning the inside knob or turning the outside knob handle after PIN code verification, the length of the connecting bar will need adjusting. Please use a file to take a little more off the length of the connecting bar and refit the lock case. This will only need fine tuning to ensure the smooth operation of your lock.)

9 Staple fitting



- Close the door and using the lock case as a guide mark the position of the remaining component - the 'staple' - on the door frame.
- Chisel out a recess in the door frame to hold the staple flush with the frame and fix it with the screws provided.

10 Insert batteries and close the cover



11 Check points after installation

- Make sure to leave the door open when registering your PIN because you may accidentally lock the door while trying to register or change your PIN code.
- Open the battery cover in the back body and press ① (Registration) button once.
(See full user guide for instructions for use.)
- Enter a family code (4 to 12 digits) and enter # button.
- Enter a visitor code (4 to 12 digits) and followed by # button and ① (Registration) to complete.
- Touch the keypad with your palm to wake up the keypad.
- Enter a PIN code and enter * button or touch the keypad with your palm to open the door.
- Turn the knob handle several times to retract the latch bolt.
- The knob handle will not retract the latch bolt after few seconds.

⚠ To avoid any possibility of being locked out, do not close the door until a PIN code has been successfully registered to allow access back in.