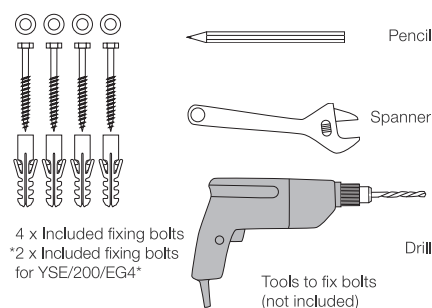
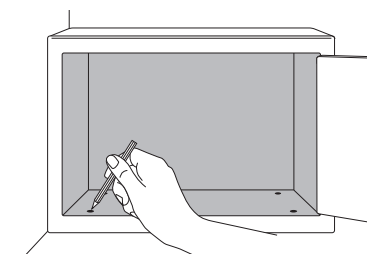


9. Battery replacement warning

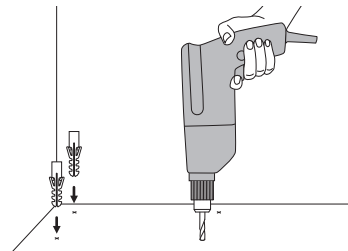
To test the batteries: Press “ENTER”, if the batteries are low, on display will show ‘Lo-bAT’, and then you should replace the batteries.



- 1 Mark the position of the safe through fixing holes.



- 2 Remove the safe and drill the holes as marked. If needed, drop the plugs in the drilled holes.

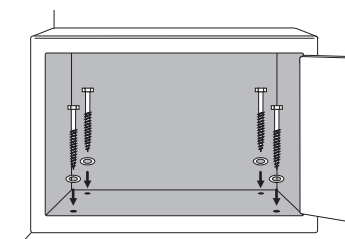


10. Installing the safe

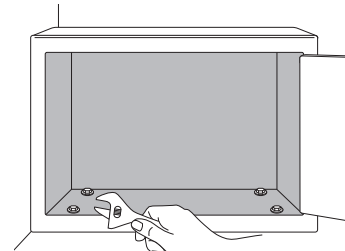
To reduce the risk of theft it is essential that your safe is securely fixed. Please use the provided bolts to fix the safe horizontally and secure to a solid concrete floor or wall.

For your convenience, there are fixing holes both in the bottom and on the back, please fix the safe correctly according to diagram 3.

- 3 Reposition the safe over the holes. Drop the screws and washers through the safe into the drilled holes.



- 4 Tighten the fixing bolts firmly and ensure there is no movement of the safe.



For any inquiries visit www.yaleasia.com

Back Cover

Yale Essential Electronic Safe User Manual

Thank you for choosing our safe!
Before operating your new safe, please read the user manual to ensure maximum performance.

For models:

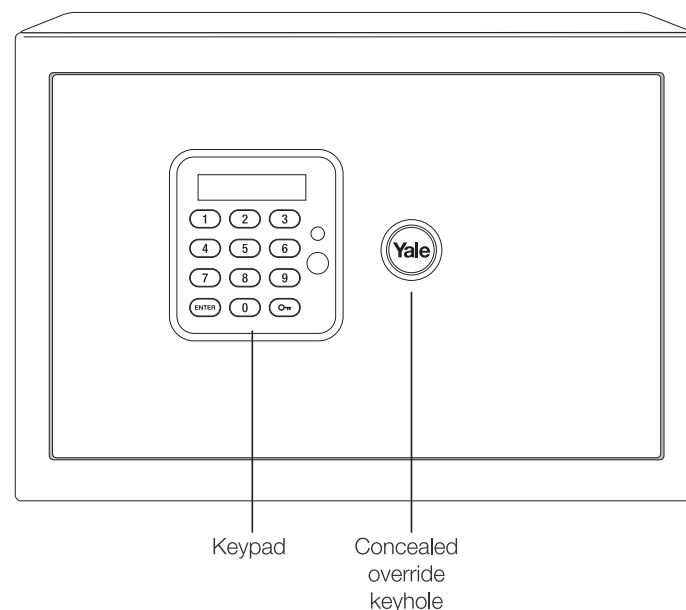
YSE/200/EG4

YSE/250/EG4

YSE/390/EG4

YLE/200/EG4

Please keep manual safe for future reference.



The world's favorite lock



An ASSA ABLOY Group brand ASSA ABLOY

Cover

1. Install the battery

The safe is unlocked after leaving the factory.

The safe requires one (6F22/9V) battery. Remove the battery cover at the back of the door and install the battery into the compartment. Ensuring the battery is fitted with correct corresponding polarity.

2. Programming the code

The safe is programmed with two sets of codes. For your safety, after installing the batteries, you should program two sets of your new codes to replace the factory preset codes.

The factory pre-set user code is 0,0,0,0, the factory pre-set master code is 8,8,8,8, when you program the new user code or master code, the factory pre-set codes will be replaced automatically.

Programming the User Code

- a. When the door is open, press “ENTER” and on hold, simultaneously press the button “3”, on display show “SET COdE”.

- b. Input your code combination (3-8 digits).
c. Press “O—” to confirm. On display “rPEAT”.
d. Enter the codes just entered, press the button “O—”, on display show “good”.

Programming the Master Code

- a. When the door is open, press “ENTER” and on hold, simultaneously press the button “4”, on display show “OLD COdE”.
b. Input the old master code (Factory pre-set code 8888), press “O—” to confirm. On display show “SET COdE”.
c. Input your code combination as new master code (3-8 digits).
d. Press “O—” to confirm. On display show “rPEAT”.
e. Enter the codes just entered, press the button “O—”, on display show “good”.

Notice: When you enter the code, you can delete the number by pressing “ENTER”

3. Opening the safe

- a. Press “ENTER”, on display show “ENT COdE”.
b. Input user code or master code you programmed. Press “O—” to confirm. On display show “OPEN”, then the door is open automatically.

Warning:

- a. If an intruder enters wrong codes for 3 times consecutively, the buzzer will be sound for 60 seconds and on display show “Error”.
b. Use the override key to open the safe can stop the sound.

4. Close the safe

Press the button “ENTER” and then “O—”, on display show “closE”, The door is closed.

5. Buzzer control

Press “ENTER” and simultaneously press 2, you can control buzzer sound.

When display shows ‘bUZZER’, means buzzer will work; when display shows ‘SILENT’, means buzzer will not work except warning buzzer.

6. Code display control

- a. Press “ENTER” and hold it, then input 1;
b. When display shows “dp-----”, means digital code will not be display; when display shows “dp COdE”, means digital code will be displayed

7. Override instruction to open the safe

This safe has a manual override system operated by the keys supplied.

- a. Move the plate in anti-clockwise direction.
b. Insert the key into the lock and turn it anti-clockwise to open the door

Warning: Do not keep the keys in safe itself!

8. Open the safe on conditions of low battery

If the battery is too low to work smoothly, you can carry out the power supply from the outside by one (6F22/9V) battery to be put on the keyboard terminals, the other operation are the same as above third step.