

Yale®

8001 Window Bolt Fitting Instructions

Tools Required



Drill



**Required
Drill Bits:**
10mm Drill Bit
16mm Flat Drill Bit

Posidrive
Screwdriver19mm
Chisel

Pencil



Ruler

Fitting instructions

Prior to fitting familiarise yourself with its simple action.

Caution: Before drilling or fitting screws check position of glass and seals.

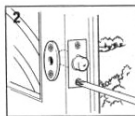
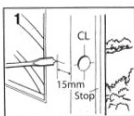
1. Mark horizontal line on window edge and inner face at desired height, intersect with centre line on window edge measuring from the stop. Carefully drill a 16mm hole, 35mm deep for bolt body, ensure drill is level and straight. Hole depth can be marked on drill bit with tape. Measure 15mm from window edge and carefully drill a 10mm dia hole until it breaks into the hole for the bolt body. (Fig 1) **Do not drill right through window.**

2. Fit bolt into window edge. If gap between window and fixed frame is 3mm or less, with face plate vertical, mark around edge, remove and chisel out so face plate lies flush. Do not recess if gap over 3mm. Mark fixing holes and secure with screws. Check operation then place oval plate centrally over keyhole in lock body and fix with screws. **Do not overtighten**

3. Close window, operate bolt to mark fixed frame. Carefully drill a 16mm dia hole to appropriate depth to accept bolt when fully thrown depth = 7mm minus gap between face plate and fixed frame). Position rectangular plate over hole, mark around edge then chisel out to lie flush. Fix plate with screws. **Do not overtighten. Check operation.**

NB. Equivalent imperial sizes are approximate.

If this product requires lubrication then use a propriety maintenance fluid (e.g. WD40) not oil. Do not use abrasive cleaners, solvents or polish. Only use a moist soft cloth.

**Yale®**

The world's favourite lock since 1843

School Street, Willenhall, West Midlands WV13 3PW

www.yale.co.uk Tel: +44 (0) 1902 364647 E-mail: info@yale.co.uk